



The Kingspan **KoolDuct**® System

CATALOG OF MATERIALS, TOOLS & ACCESSORIES



*Low Energy -
Low Carbon Buildings*

Contents

	Page
Introduction	3
<i>Kingspan</i> KoolDuct [®] Panels	4
<i>Kingspan</i> KoolDuct [®] Ancillaries	5
<i>Kingspan</i> KoolDuct [®] Flanges & Accessories	6
<i>Kingspan</i> KoolDuct [®] Reinforcements	9
<i>Kingspan</i> KoolDuct [®] Fabrication Tools & Spare Parts	10
<i>Kingspan</i> KoolDuct [®] Jack Planes & Holders	14
<i>Kingspan</i> KoolDuct [®] Blades	15

A Note About this Document

- a. All measurements given in this document are approximate.
- b. Pack / unit sizes are given in the order of: length x width x height, depth or diameter.
- c. *Kingspan* **KoolDuct**[®] System Delivery Partners may not stock all items shown in this document.
- d. *Kingspan Insulation Ltd* reserves the right to change any information contained in this document without prior notice.

Introduction

What is The *Kingspan KoolDuct*® System?

The *Kingspan KoolDuct*® System comprises premium performance *Kingspan KoolDuct*® panels, fabrication methods, coupling systems and a complete line of accessories to produce pre-insulated rectangular ductwork in sections up to 13 ft / 3.93 m long. *Kingspan KoolDuct*® panels are available in the following standard thicknesses and corresponding installed R-values:

- $7/8"$ = R-6.0 (ft²·hr·°F/Btu) /
22 mm = R-1.047 (m²·K/W); and
- $1\ 3/16"$ = R-8.1 (ft²·hr·°F/Btu) /
30 mm = R-1.428 (m²·K/W).

This allows ductwork to be fabricated with different wall thicknesses to suit different performance specifications.

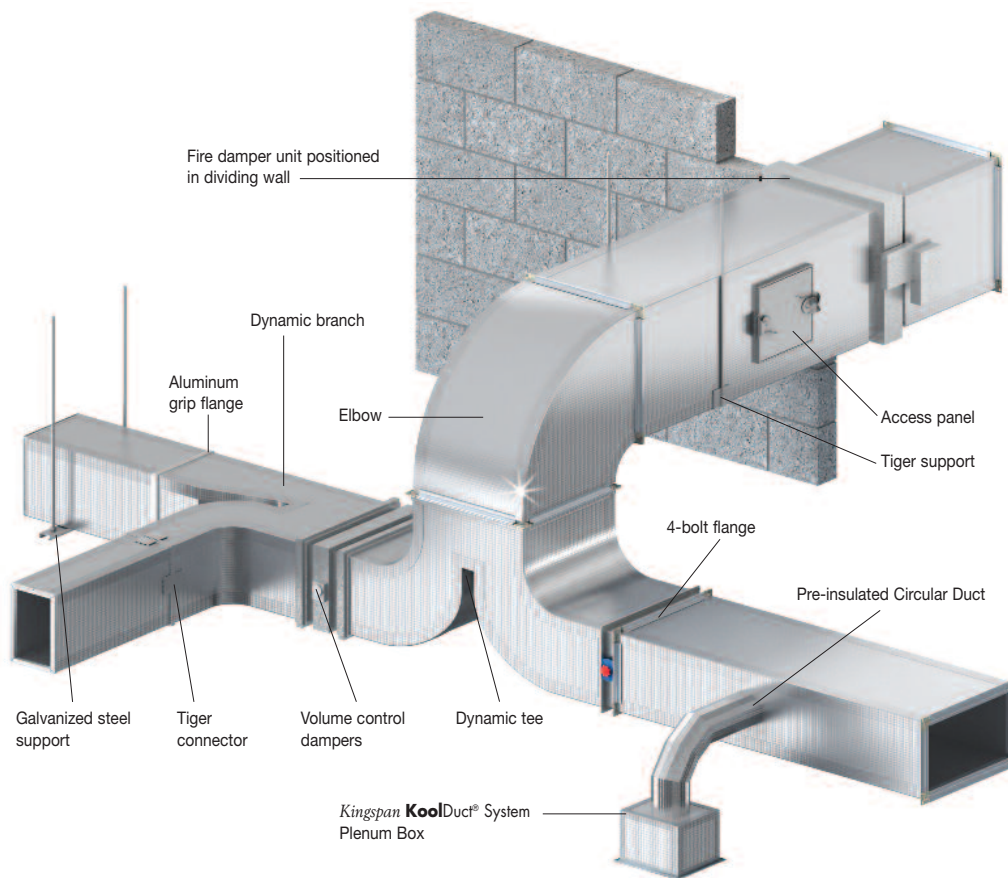
In addition, there are several coupling systems available to suit different installation and project specification requirements. They include the 4-bolt, aluminum grip and Tiger Clip systems.

Availability

Kingspan Insulation offers a complete product line, providing all materials, tools and accessories necessary for the effective fabrication of ductwork from The *Kingspan KoolDuct*® System, each of which are shown in this document. To facilitate a single source supply, the complete product line is available to purchase through appointed *Kingspan KoolDuct*® System Delivery Partners, a list of which is supplied at www.kingspaninsulation.us.

Each component has been rigorously tested in the field, in a variety of ductwork applications, to the highest performance standards. This ensures that the quality of the materials from which ductwork from The *Kingspan KoolDuct*® System is fabricated, meets the standards required by Kingspan Insulation.

As a result, under no circumstances are unapproved components to be used in place of the coupling systems, adhesive, silicone sealant and aluminum tape supplied by Kingspan Insulation. Prior approval in writing should be obtained from Kingspan Insulation (see rear cover) for the use of alternative materials.



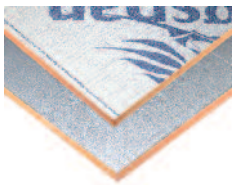
Kingspan **KoolDuct**® Panels

Kingspan **KoolDuct**® Panel ($7/8'' = R-6.0$)



Pack Quantity	9 x 50.76 sq.ft
Pack Weight	154.32 lb
Pack Size	12.89' x 3.94' x 0.65'
Panel Size	12.89' x 3.94' x $7/8''$
Panel Facings	Silver Branded / Silver Plain
Outer Packaging	Plastic Bag

Kingspan **KoolDuct**® Panel ($1\ 3/16'' = R-8.1$)



Pack Quantity	7 x 50.76 sq.ft
Pack Weight	156.53 lb
Pack Size	12.89' x 3.94' x 0.69'
Panel Size	12.89' x 3.94' x $1\ 3/16''$
Panel Facings	Silver Branded / Silver Plain
Outer Packaging	Plastic Bag

Kingspan **KoolDuct**® Ancillaries

Silicone Sealant

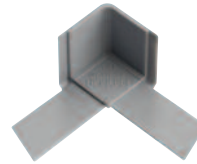
231G



Pack Quantity	24 x 10.48 fl. oz
Pack Weight	22 lb
Pack Size	11.8" x 7.9" x 9.4"
Outer Packaging	Cardboard Box

Dual Angle

262



Pack Quantity	100
Pack Weight	3 lb
Pack Size	21.7" x 15.7" x 5.9"
Outer Packaging	Plastic Bag

Adhesive

212



Pack Quantity	4 x 1.1 Gal. (4 x 9 lb)
Pack Weight	42 lb
Pack Size	15.7" x 11.2" x 11.4"
Outer Packaging	Cardboard Box

Nylon Angle

261



Pack Quantity	100
Pack Weight	3 lb
Pack Size	21.7" x 15.7" x 3.9"
Outer Packaging	Plastic Bag

Smooth Aluminum Tape UL Listed (3")

223



Pack Quantity	16 x 180 ft
Pack Weight	44 lb
Pack Size	12.2" x 12.2" x 12.6"
Outer Packaging	Cardboard Box

Nylon End Cap*

281

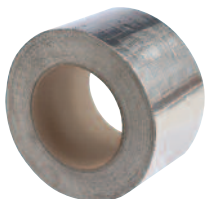


Pack Quantity	100
Pack Weight	0.3 lb
Pack Size	6.3" x 4.7" x 1.6"
Outer Packaging	Plastic Bag

*For use with item 321.

Reinforced Aluminum Tape (3")

221



Pack Quantity	16 x 164 ft
Pack Weight	31 lb
Pack Size	10.6" x 10.6" x 12.4"
Outer Packaging	Cardboard Box

Aluminum Tiger Support

266



Pack Quantity	150
Pack Weight	13 lb
Pack Size	15.7" x 15.7" x 8.7"
Outer Packaging	Cardboard Box

Gasket

242

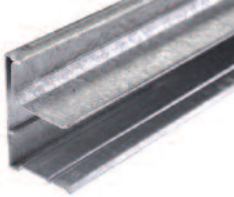


Unit Quantity	33 x 6.6 ft
Pack Weight	3 lb
Pack Size	39.8" x 19.7" x 1.2"
Outer Packaging	None - Loose Item

Kingspan **KoolDuct**® Flanges & Accessories

4-bolt Flange
for 7/8" Panel

380



Unit Quantity	1
Unit Weight	6 lb
Unit Size	13.1' x 1.8" x 1.2"
Outer Packaging	None - Loose Item

Aluminum Tiger Unit

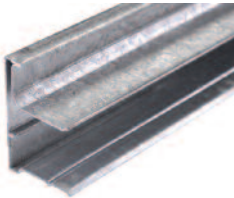
363



Pack Quantity	500
Pack Weight	11 lb
Pack Size	15.7" x 15.7" x 8.7"
Outer Packaging	Cardboard Box

4-bolt Flange
for 1 3/16" Panel

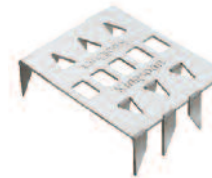
383



Unit Quantity	1
Unit Weight	7 lb
Unit Size	13.1' x 2.2" x 1.2"
Outer Packaging	None - Loose Item

Aluminum Tiger Clip

364



Pack Quantity	500
Pack Weight	6 lb
Pack Size	11" x 8.7" x 7.9"
Outer Packaging	Cardboard Box

4-bolt Flange Corner Piece
for 7/8" Panel

258



Pack Quantity	250
Pack Weight	31 lb
Pack Size	15.7" x 7.5" x 13.4"
Outer Packaging	Cardboard Box

4-bolt Flange Corner Piece
for 1 3/16" Panel

268



Pack Quantity	200
Pack Weight	35 lb
Pack Size	15.7" x 7.9" x 13.4"
Outer Packaging	Cardboard Box

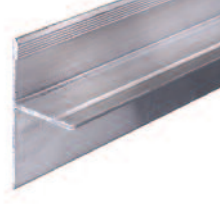
Internal Aluminum Grip Flange 311
for 7/8" Panel*



Unit Quantity	1
Unit Weight	2 lb
Unit Size	13.1' x 1" x 1.2"
Outer Packaging	None - Loose Item

*For use with items 313, 314 & 315.

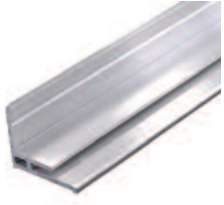
External F Aluminum Grip Flange 313
for 7/8" & 1 3/16" Panels*



Unit Quantity	1
Unit Weight	2 lb
Unit Size	13.1' x 2" x 1.2"
Outer Packaging	None - Loose Item

*For use with items 311 or 317.

Internal Aluminum Grip Flange 317
for 1 3/16" Panel*



Unit Quantity	1
Unit Weight	2 lb
Unit Size	13.1' x 1.4" x 1.4"
Outer Packaging	None - Loose Item

*For use with items 313, 314 & 315.

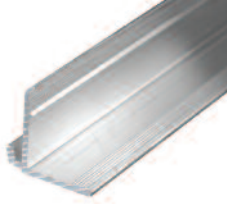
External h Aluminum Grip Flange 314
for 7/8" & 1 3/16" Panels*



Unit Quantity	1
Unit Weight	2 lb
Unit Size	13.1' x 2.4" x 1.6"
Outer Packaging	None - Loose Item

*For use with items 311 or 317.

External Aluminum Grip Flange 312
for 7/8" & 1 3/16" Panels*



Unit Quantity	1
Unit Weight	2 lb
Unit Size	13.1' x 1.2" x 1"
Outer Packaging	None - Loose Item

*For use with items 321 & 311 or 317.

External U Aluminum Grip Flange 315
for 7/8" & 1 3/16" Panels*



Unit Quantity	1
Unit Weight	2 lb
Unit Size	13.1' x 1.2" x 1"
Outer Packaging	None - Loose Item

*For use with items 311 or 317.

Aluminum Bayonet Cleat 321
for 7/8" & 1 3/16" Panels*

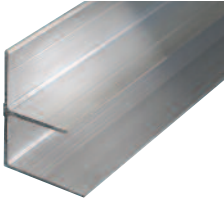


Unit Quantity	1
Unit Weight	1.5 lb
Unit Size	13.1' x 1.4" x 0.2"
Outer Packaging	None - Loose Item

*For use with item 312.

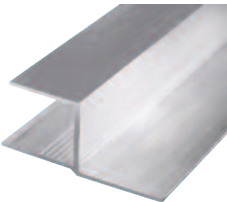
Kingspan **KoolDuct**® Flanges & Accessories

Structural F Aluminum Flange 332 for 7/8" Panel



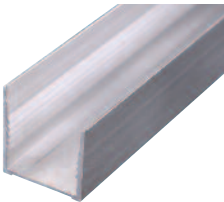
Unit Quantity	1
Unit Weight	3 lb
Unit Size	13.1' x 1.6" x 1.8"
Outer Packaging	None - Loose Item

Structural h Aluminum Flange 333 for 7/8" Panel



Unit Quantity	1
Unit Weight	3 lb
Unit Size	13.1' x 2.4" x 1.2"
Outer Packaging	None - Loose Item

Structural U Aluminum Flange 334 for 7/8" Panel



Unit Quantity	1
Unit Weight	2 lb
Unit Size	13.1' x 1.4" x 1"
Outer Packaging	None - Loose Item

Kingspan **KoolDuct**® Reinforcements

Positive Reinforcement Bar (Aluminum Inner) 352



Unit Quantity	1
Unit Weight	1 lb
Unit Size	13.1' x 0.4" (l x O.D.)
Outer Packaging	None - Loose Item

Reinforcement Disc 353



Pack Quantity	100
Pack Weight	4 lb
Pack Size	6.3" x 3.9" x 3.9"
Outer Packaging	Cardboard Box

Negative Reinforcement Bar (Aluminum Outer) 351



Unit Quantity	1
Unit Weight	1 lb
Unit Size	13.1' x 0.6" (l x O.D.)
Outer Packaging	None - Loose Item

Speed Clip* 354



Pack Quantity	100
Pack Weight	0.4 lb
Pack Size	8.3" x 4.3" x 1"
Outer Packaging	Plastic Bag

**For use with item 452.*

Positive Reinforcement Bar (PVC Inner) 344



Unit Quantity	1
Unit Weight	1 lb
Unit Size	13.1' x 0.4" (l x O.D.)
Outer Packaging	None - Loose Item

Negative Reinforcement Bar (PVC Outer) 343



Unit Quantity	1
Unit Weight	1 lb
Unit Size	13.1' x 0.6" (l x O.D.)
Outer Packaging	None - Loose Item

Kingspan **KoolDuct**® Fabrication Tools & Spare Parts

Portable Work Table (13.1' x 3.94') 411



Unit Quantity	1
Pack Weight	225 lb
Pack Size	78.7" x 47.2" x 7.1"
Outer Packaging	None - Loose Item

Clamping Rule (3.94') 433



Unit Quantity	1
Pack Weight	8 lb
Pack Size	4.9' x 3.1" x 1.6"
Outer Packaging	None - Loose Item

Cutting Mat (13.1' x 3.94') 414



Unit Quantity	1
Pack Weight	10 lb
Pack Size	49.2" x 7.9" x 7.9"
Outer Packaging	Cardboard Box

Clamping Rule (13.1') 431



Unit Quantity	1
Pack Weight	16 lb
Pack Size	14.1' x 3.1" x 1.6"
Outer Packaging	None - Loose Item

Portable Tool Box Set 421u



Unit Quantity	1
Pack Weight	27 lb
Pack Size	18.9" x 13.4" x 6.3"
Outer Packaging	Cardboard Box

Set Square Rule (2.3') 435



Unit Quantity	1
Unit Weight	4 lb
Unit Size	2.3' x 17.7" x 11.8"
Outer Packaging	None - Loose Item

Straight Aluminum Rule (3.94') 434



Unit Quantity	1
Unit Weight	1 lb
Unit Size	3.94' x 1.6" x 0.8"
Outer Packaging	None - Loose Item

Set Square Rule (3.94') 436



Unit Quantity	1
Unit Weight	5 lb 12 oz
Unit Size	3.94' x 24.4" x 11.8"
Outer Packaging	None - Loose Item

Manual Bending Machine 441



Unit Quantity	1
Unit Weight	93 lb
Unit Size	51.2" x 7.1" x 15"
Outer Packaging	None - Loose Item

Kool Clamp* 453



Unit Quantity	1
Unit Weight	0.7 lb
Unit Size	7.5" x 3.5" x 1.6"
Outer Packaging	Shrink-wrap

*For use with item 312.

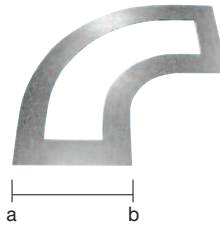
Bending Guide* 445



Unit Quantity	1
Unit Weight	6 lb
Unit Size	28" x 23.6" x 3.9"
Outer Packaging	None - Loose Item

*For use with item 441.

Elbow Template Set* 446



Pack Quantity	1 x 13
Pack Weight	51 lb
Pack Size	48" x 55" x 0.6"
Outer Packaging	Cardboard Box

*Elbow sizes from 5.9" to 29.5" (a to b).

Duct Holder 462



Unit Quantity	1
Unit Weight	5 lb
Unit Size	59.1" x 12.2" x 5.1"
Outer Packaging	None - Loose Item

Round Hole Cutter* 443



Unit Quantity	1
Unit Weight	1 lb
Unit Size	13" x 1.6" x 3.5"
Outer Packaging	Shrink-wrap

*Includes item 745 for 7/8" panel.
Use with item 747 for 1 3/16" panel.

Kingspan **KoolDuct**® Fabrication Tools & Spare Parts

Tape Marker

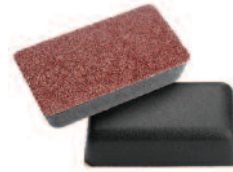
521



Unit Quantity	1
Unit Weight	0.7 lb
Unit Size	4.9" x 3.3" x 0.8"
Outer Packaging	None - Loose Item

Abrasive File

562



Unit Quantity	1
Unit Weight	0.2 lb
Pack Size	4.5" x 2.6" x 1.2"
Outer Packaging	Plastic Bag

Flexible Spatula

525



Pack Quantity	5
Pack Weight	0.2 lb
Pack Size	3.9" x 3" x 2.6"
Outer Packaging	Plastic Bag

Extended Silicone Tool

444



Unit Quantity	1
Unit Weight	4.4 lb
Unit Size	74.8" x 8.5" x 2.8"
Outer Packaging	None - Loose Item

Rigid Spatula

526



Unit Quantity	1
Unit Weight	0.2 lb
Pack Size	8.1" x 2" x 1.8"
Outer Packaging	Plastic Bag

Grip Notcher*

451



Unit Quantity	1
Unit Weight	29 lb
Pack Size	9.1" x 9.1" x 22.8"
Outer Packaging	Cardboard Box

**For use with items 312, 313, 314 & 315.*

Pencil Marker

522



Unit Quantity	1
Unit Weight	0.04 lb
Unit Size	7.1" x 0.4 (l x O.D.)
Outer Packaging	None - Loose Item

Speed Clip Tool

452



Unit Quantity	1
Unit Weight	0.2 lb
Unit Size	7.1" x 1.2" x 1.2"
Outer Packaging	None - Loose Item

**For use with item 354.*

Pneumatic Glue Spreader 442



Unit Quantity	1
Pack Weight	46 lb
Pack Size	35.4" x 16.1" x 16.5"
Outer Packaging	Cardboard Box

Pneumatic Glue Spreader Hose* 731



Unit Quantity	1 (Coiled)
Unit Weight	0.4 lb
Unit Size	11" x 11" x 1.2"
Outer Packaging	None - Loose Item

**For use with item 442.*

Pneumatic Glue Spreader Tool* 721



Unit Quantity	1
Unit Weight	1 lb
Unit Size	10" x 6.3" x 2"
Outer Packaging	None - Loose Item

**For use with item 442.*

Pneumatic Glue Spreader Brush* 711



Unit Quantity	1
Unit Weight	0.04 lb
Unit Size	2.2" x 0.6" x 0.6"
Outer Packaging	None - Loose Item

**For use with item 442.*

Kingspan **KoolDuct**® Jack Planes & Holders

Jack Plane Left (45° Single Blade) 514u
for 7/8" & 1 3/16" Panels*



Unit Quantity	1
Pack Weight	1 lb
Pack Size	3.9" x 3" x 3.9"
Outer Packaging	Shrink-wrap
<i>*Includes item 741 for 7/8" panel.</i>	
<i>Use with item 744 for 1 3/16" panel.</i>	

Universal Jack Plane (Variable Angle Dual Blade) for 7/8" Panel 518



Unit Quantity	1
Unit Weight	4 lb
Unit Size	9.1" x 6.3" x 6.3"
Outer Packaging	Shrink-wrap
<i>*For use with item 743.</i>	

Jack Plane Right (45° Single Blade) 515u
for 7/8" & 1 3/16" Panels*



Unit Quantity	1
Pack Weight	1 lb
Pack Size	3.9" x 3" x 3.9"
Outer Packaging	Shrink-wrap
<i>*Includes item 741 for 7/8" panel.</i>	
<i>Use with item 744 for 1 3/16" panel.</i>	

Jack Plane (22.5° V Dual Blade) for 7/8" Panel* 512



Unit Quantity	1
Pack Weight	3 lb
Pack Size	8.7" x 5.5" x 4.3"
Outer Packaging	Shrink-wrap
<i>*For use with item 741.</i>	

Jack Plane (90° Single Blade) 513u
for 7/8" & 1 3/16" Panels*



Unit Quantity	1
Pack Weight	1 lb
Pack Size	3.9" x 3" x 3.9"
Outer Packaging	Shrink-wrap
<i>*Includes item 741 for 7/8" panel.</i>	
<i>Use with item 744 for 1 3/16" panel.</i>	

Jack Plane (45° Dual Blade) for 1 3/16" Panel* 516



Unit Quantity	1
Pack Weight	4 lb
Pack Size	8.3" x 5.5" x 4.7"
Outer Packaging	Shrink-wrap
<i>*For use with item 744.</i>	

Jack Plane (45° Dual Blade) for 7/8" Panel* 511u



Unit Quantity	1
Pack Weight	3 lb
Pack Size	8.7" x 5.7" x 4.3"
Outer Packaging	Shrink-wrap
<i>*For use with item 741.</i>	

Jack Plane (22.5° V Dual Blade) for 1 3/16" Panel* 519



Unit Quantity	1
Pack Weight	3 lb
Pack Size	8.3" x 5.5" x 4.3"
Outer Packaging	Shrink-wrap
<i>*Includes item 741.</i>	

Jack Plane Holder 500



Unit Quantity	1
Unit Weight	1 lb
Unit Size	9.1" x 3.1" x 2.4"
Outer Packaging	None - Loose Item

Kingspan **KoolDuct**® Blades

Jack Plane Blade
for 7/8" Panel*

741



Pack Quantity	10
Pack Weight	0.1 lb
Pack Size	4.3" x 3.1" x 0.4"
Outer Packaging	Plastic Bag
<i>*For use with items 511, 512, 513, 514, 515 & 519.</i>	

Round Hole Cutter Blade
for 7/8" Panel*

745



Unit Quantity	1
Unit Weight	0.01 lb
Unit Size	2.4" x 0.4" x 0.2"
Outer Packaging	Plastic Sheath
<i>*For use with item 443.</i>	

Jack Plane Blade
for 1 3/16" Panel*

744



Unit Quantity	1
Pack Weight	0.02 lb
Pack Size	4.7" x 0.8" x 0.2"
Outer Packaging	Plastic Bag
<i>*For use with items 513, 514, 515 & 516.</i>	

Blade & Holder
for 7/8" & 1 3/16" Panel*

747



Pack Quantity	1 x Blade & 1 x Holder
Pack Weight	0.2 lb
Pack Size	6.3" x 4.7" x 0.4"
Outer Packaging	Plastic Sheath
<i>*For use with item 443.</i>	

Blade*

743



Pack Quantity	2
Pack Weight	0.1 lb
Pack Size	4.7" x 1.2" x 0.2"
Outer Packaging	Plastic Bag
<i>*For use with items 518 & 443.</i>	

Contact Details

General Inquiries

Sales Office:

2 Ravinia Drive, Suite 500, Atlanta, GA 30346, USA

Tel: +1 678 855 7176

Fax: +1 678 855 7101

email: info@kingspaninsulation.us

Technical Advisory Service

The *Kingspan KoolDuct*[®] System is supported by a complementary and comprehensive technical advisory service for designers, specifiers, fabricators, installers, building services managers and facilities managers. Expert guidance is provided to make specification and installation, operation and maintenance of ductwork fabricated from The *Kingspan KoolDuct*[®] System, as straightforward as possible. Project specific advice and solutions for non-standard applications and complex technical issues are also offered.

Amongst other services, heat loss / gain, condensation / dew-point risk and required insulation thickness can be calculated.

Tel: +1 678 855 7176

Fax: +1 678 855 7101

email: hvactechnical@kingspaninsulation.us

Kingspan Insulation Ltd reserves the right to amend product specifications without prior notice. Product thicknesses shown in this document should not be taken as being available ex-stock and reference should be made to the current Kingspan Insulation Ltd price list or advice sought directly from Kingspan Insulation Ltd. The information, technical details and fixing instructions etc. included in this literature are given in good faith and apply to uses described herein. Recommendations for use should be verified as to the suitability and compliance with actual requirements, specifications and any applicable codes, laws and regulations. For other applications or conditions of use, Kingspan Insulation Ltd offers a Technical Advisory Service, the advice of which should be sought for uses of Kingspan Insulation Ltd products that are not specifically described herein. The fire tests referenced in this literature and the assigned results are not intended to reflect hazards presented by the materials and products described herein under actual fire conditions. Please check that your copy of the literature is current by visiting www.kingspaninsulation.us.



Kingspan Insulation Ltd

Pembridge, Leominster, Herefordshire HR6 9LA, UK
Tel: +44 (0) 1544 388 601 Fax: +44 (0) 1544 388 888
email: info@kingspaninsulation.co.uk

www.kingspaninsulation.us